



**MAHA MERWAH SDN.
BHD. (MALAYSIA)
MAHA MERWAH PTY.
LTD. (AUSTRALIA)**

THE OVERHEAD TRANSMISSION LINE
COMPANY



SHERAZ IQBAL
MANAGING DIRECTOR
MAHA MERWAH GROUP
(MALAYSIA & AUSTRALIA)



QUANG DO
DIRECTOR
MAHA MERWAH PTY. LTD.
(AUSTRALIA)



VIGNESTWARY
DIRECTOR
MAHA MERWAH SDN. BHD.
(MALAYSIA)



SITI HATIJA
DIRECTOR
MAHA MERWAH SDN. BHD.
(MALAYSIA)

ANNOUNCEMENT



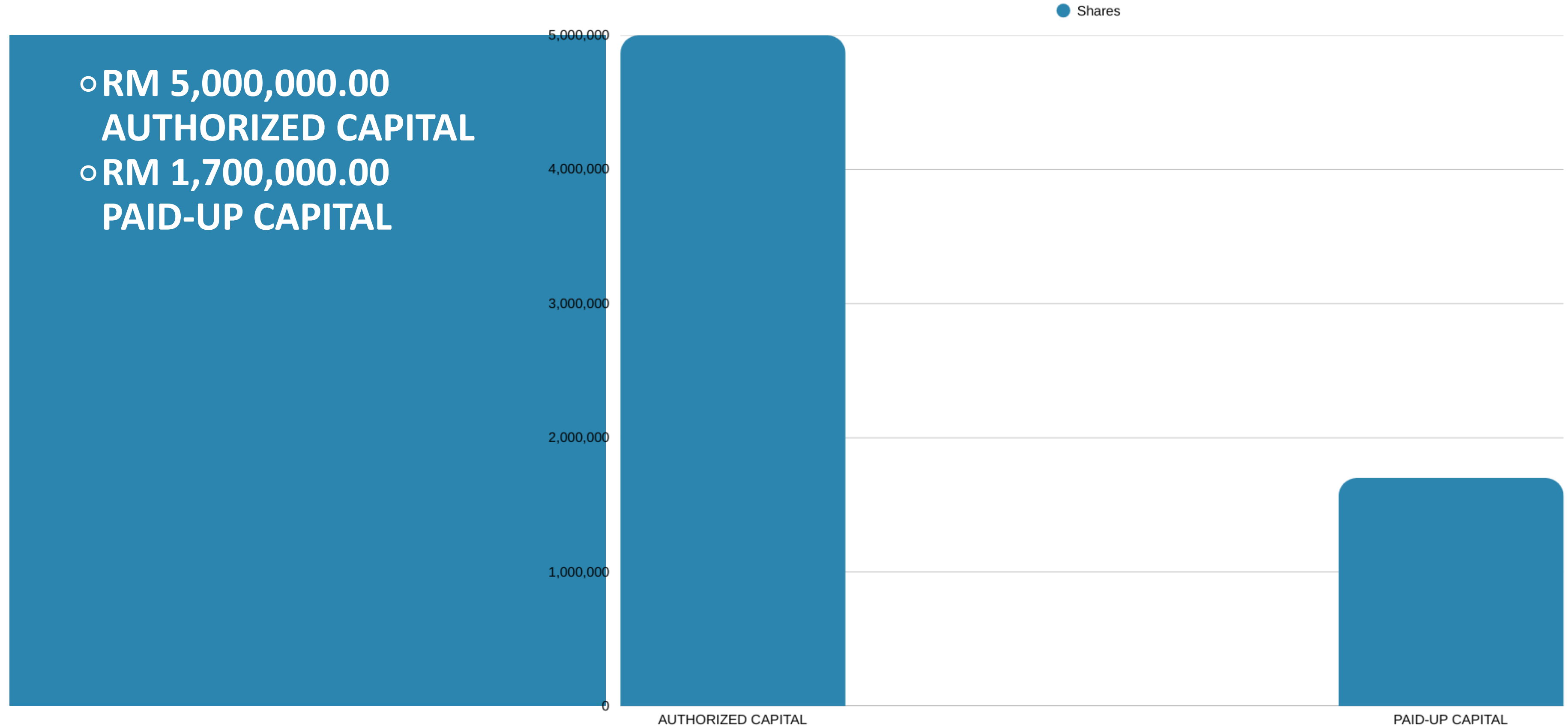
Exciting Announcement – We've Officially Stepped into Australia! We are proud to share that our new company has been officially incorporated in Australia:

❏ MAHA MERWAH PTY LTD | ABN: 28 689 768 492 | ACN: 689 768 492

This marks a significant milestone for us as we expand our presence beyond Malaysia and Pakistan, bringing our expertise in high-voltage transmission line construction, foundations, tower erection, and stringing works to the Australian market. With a strong track record of delivering complex energy infrastructure projects and a dedicated team of skilled professionals — including certified linesmen from Pakistan — we are excited to contribute to Australia's growing energy sector. Our mission remains clear: Deliver safe, efficient, and high-quality transmission infrastructure services across borders. We look forward to collaborating with local partners, utilities, and EPCs, and exploring new opportunities in Australia.



SHARE CAPITAL OF THE COMPANY



The Company

MAHA MERWAH SDN. BHD. is a power transmission line (OHTL) company incorporated in Malaysia. As a versatile contractor in the power transmission sector, we specialize in projects related to transmission lines, substation development, power plant infrastructure, and civil infrastructure. Our services are delivered by a dynamic team of highly trained professionals with extensive experience in the field. Our core business processes are defined by a commitment to transparency, effective communication, and continuous operational improvement. These principles enable us to maximize efficiency and position ourselves as a customer-focused organization dedicated to delivering top-tier professional services across various disciplines of power transmission.



The Concept

- To be a customer-driven company by providing professional services in the discipline of Power Transmission Works.
- To meet and exceed our clients' expectations in terms of quality and schedule.
- To win our clients' confidence, this will lead us to long-term mutually beneficial relationships.
- To be a leader and change agent for our industry by adopting a creative approach and setting new standards in the market.
- To work for technical advancement through the application of effective management policies, procedures, and technology.
- To give a sense of ownership to our employees by maintaining a wholesome relationship, offering open communication, and paying for a performance-based compensations system, a conducive working environment, and opportunities for growth by providing career development and job security and Health Insurance.





MISSION & VISION

- **MISSION:** To deliver high-quality overhead line construction services across the Globe.
- **VISION:** To be a leading name in the OHTL industry, recognized for excellence and reliability.

OUR COMMITMENT



QUALITY & TRUST

- Building long-lasting relationships with clients through transparency and integrity.
- Adherence to the highest standards in project execution.



INNOVATION

- Continuously improving our methods and processes for better outcomes.

ACHIEVEMENTS

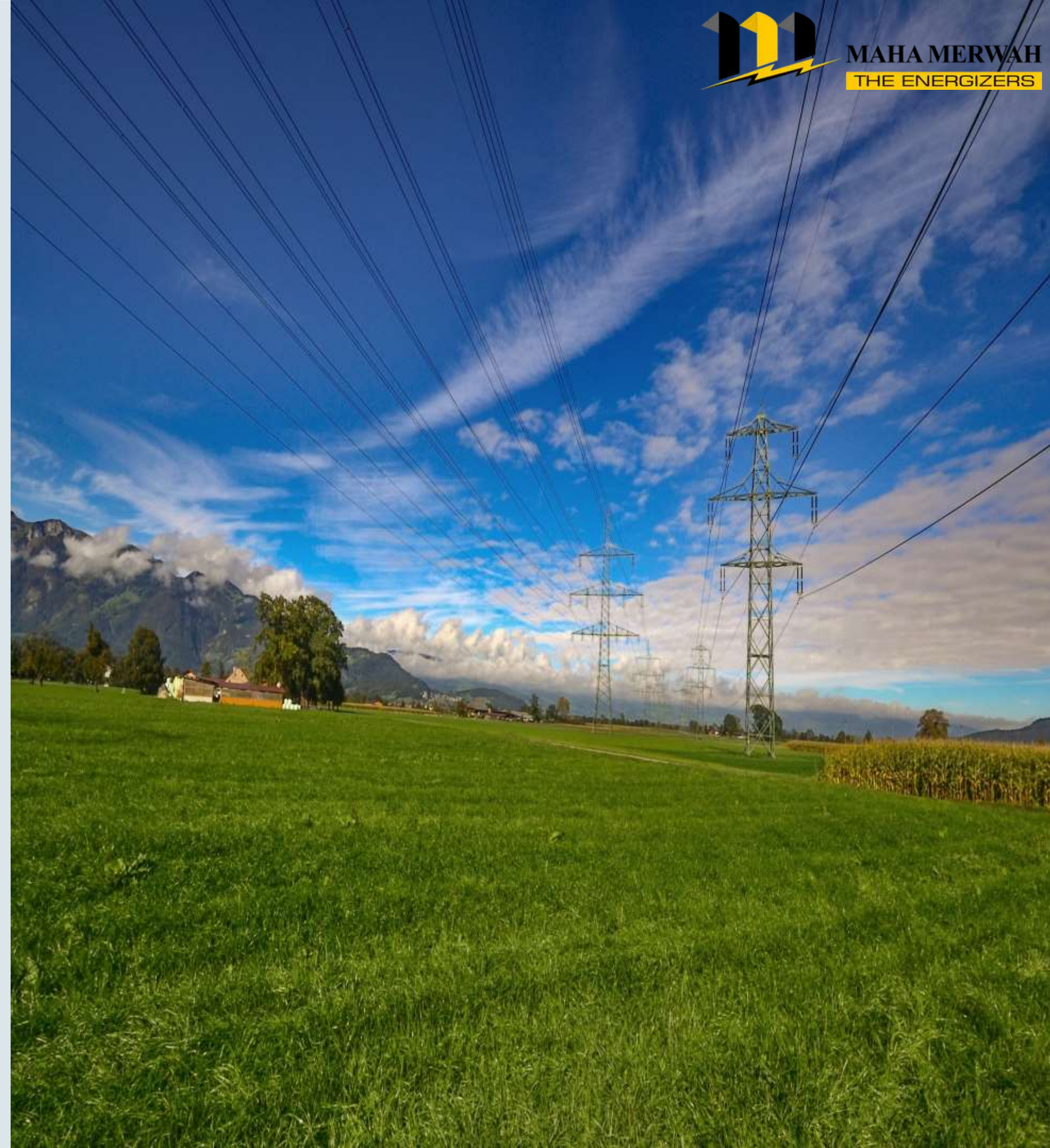
Gained the trust of clients and partners in the OHTL sector throughout MALAYSIA.



**Successfully completed projects throughout Malaysia.
Established an esteemed reputation for quality,
safety, and timeliness.**










FOOTHOLD

Maha Merwah Sdn. Bhd. has secured a strong foothold and grown into a reputable name in the OHTL industry since its inception. With a strong track record of successful projects, we are committed to maintaining our standards of excellence and expanding our impact in the industry.



OUR CLIENTS



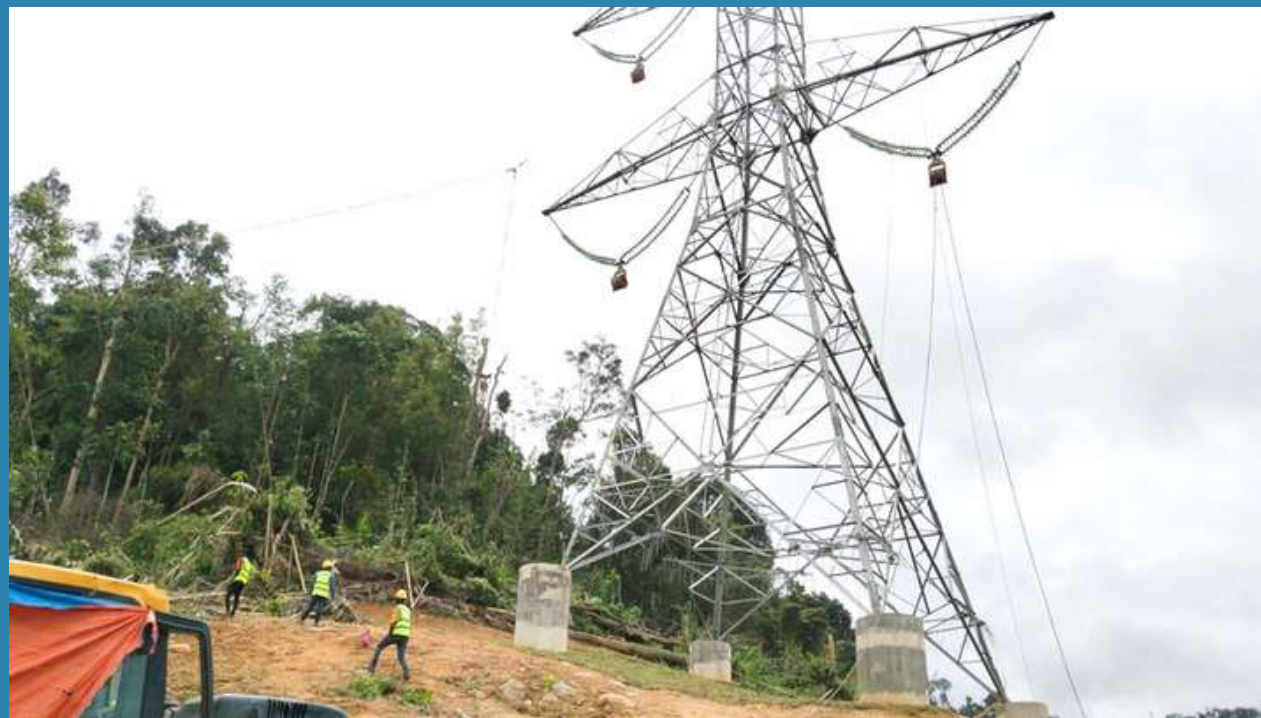
- ❑ **TENAGA NASIONAL BERHAD (TNB)** 
- ❑ **MALAYSIA RESOURCES CORPORATION BHD. (MRCB)** 
- ❑ **LARSEN & TOUBRO LIMITED** 
- ❑ **AMBC TRANSMISSION SDN. BHD.** 
- ❑ **TRENERGY INFRASTRUCTURE SDN. BHD.** 
- ❑ **SCB POWER TRANSMISSION SDN. BHD.** 
- ❑ **BRAS TRANSMISSION SDN. BHD.** 
- ❑ **LARICO INFRASTRUCTURE SDN. BHD.** 
- ❑ **MULTI DISCOVREY SDN. BHD.**
- ❑ **TRANSMISSION TECHNOLOGY SDN. BHD.**
- ❑ **P.E.S.B. ENGINEERING SDN. BHD.** 
- ❑ **HG POWER TRANSMISSION SDN. BHD.** 



PROJECTS - SNAPSHOTS



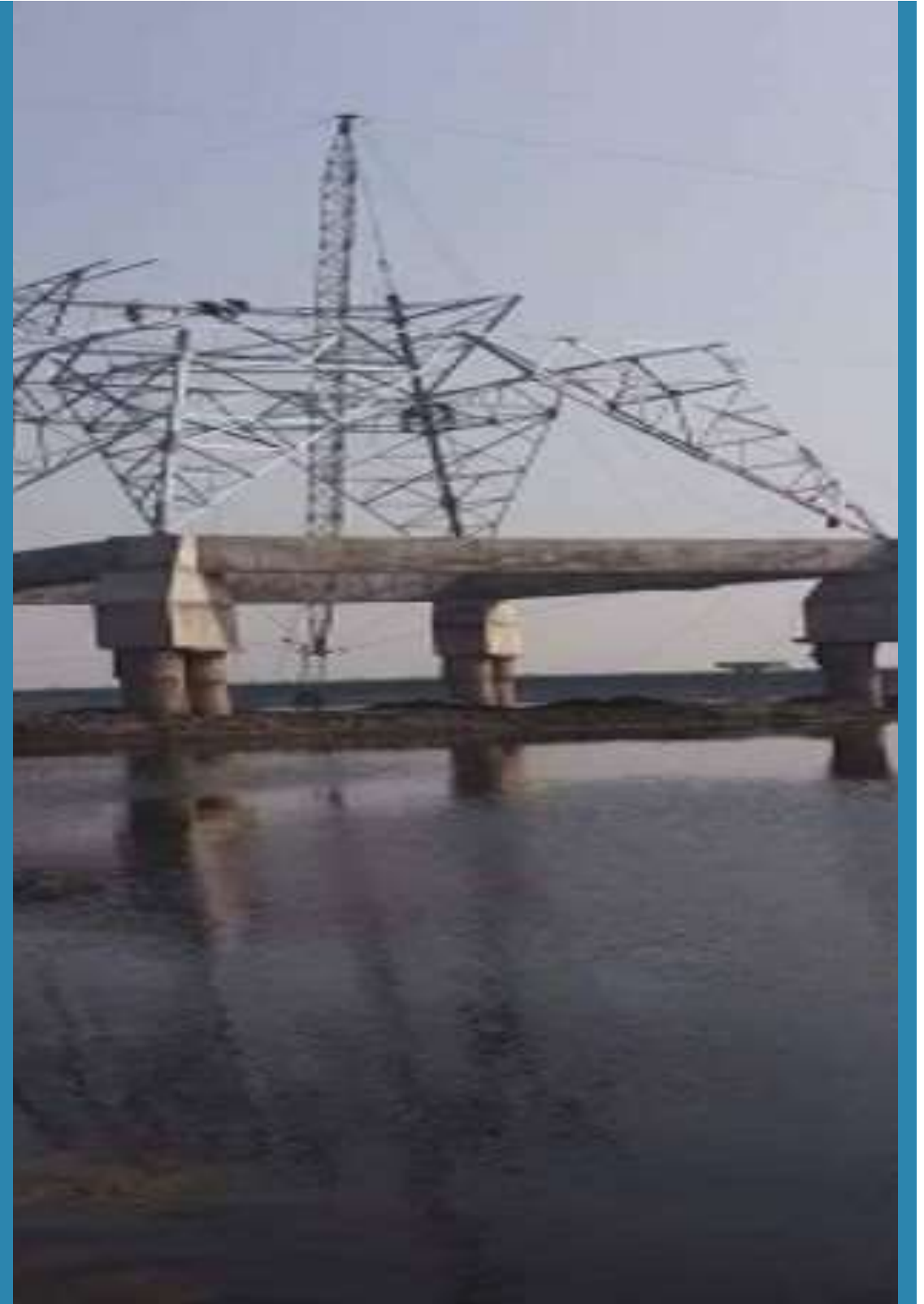
PROJECTS - SNAPSHOTS



PROJECTS - SNAPSHOTS



PROJECTS - SNAPSHOTS



PROJECTS - VIDEOS

- **POWERING THROUGH THE PEAKS**
- **Challenging Terrain**
- **Seamless Execution**



PROJECTS - VIDEOS

- **DELIVERING PRECISION
IN THE SKY**
- **Harnessing Heli-
power**
- **Terrain-defying
Undertakings**



PROJECTS - VIDEOS

- **EXPANDING CROSS-TERRAIN CAPABILITY**
- **Redefining Marine Marvels**
- **Powering Across Possibilities**



PROJECTS - VIDEOS

- **FORGING THE SPINE OF POWER**
- Bolt by Bolt, Craftsmanship
- Engineering over Adaption



PROJECTS - VIDEOS

- **EXECUTION WALK-THROUGH: A FRAME-BY-FRAME RECAP**
- **Structured Field Execution**
- **Visual Process Mapping**
- **Coordinated Operational Milestones**



ANNUAL FUNCTION

